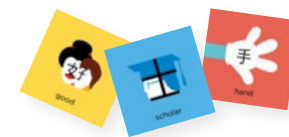


Bingo 賓果 / 宾果

#Beginner #Classroom #Family



2-4
players

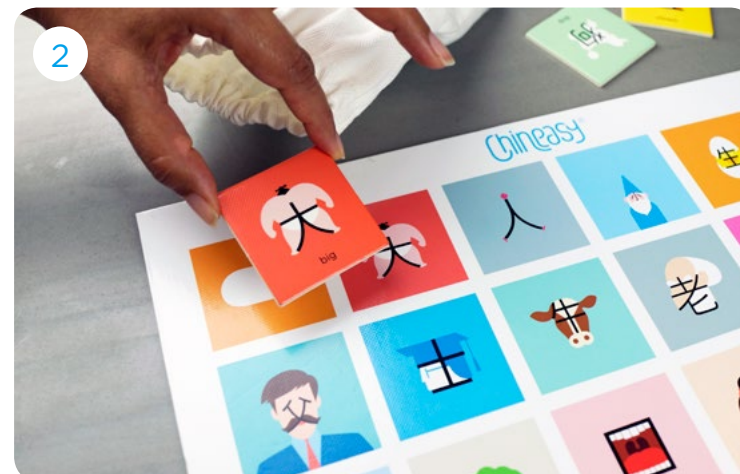
10 - 15
minutes

- flash cards x 48
- tiles x 100
- playboard x 2-4
- bag x 1

- Through this game, students are able to:
- practice Chinese characters' pronunciation
 - develop Chinese reading skill and vocabulary
 - collaborate with fellow students
 - seek information independently



Draw 25 tiles and places on the playboard, colored side up.



Draw a flash card from the bag.



Flip the tile over if you have the same character. Another player draws a flash card. Hope for matches.



Player who gets 3 lines first wins!



Created by Chineasy
f ShaoLanChineasy